



MONTHLY MEMBERSHIP PROGRESS REPORT

District 323 G1

Results as of: 11/30/2015

GMT: KAMLESH JAIN

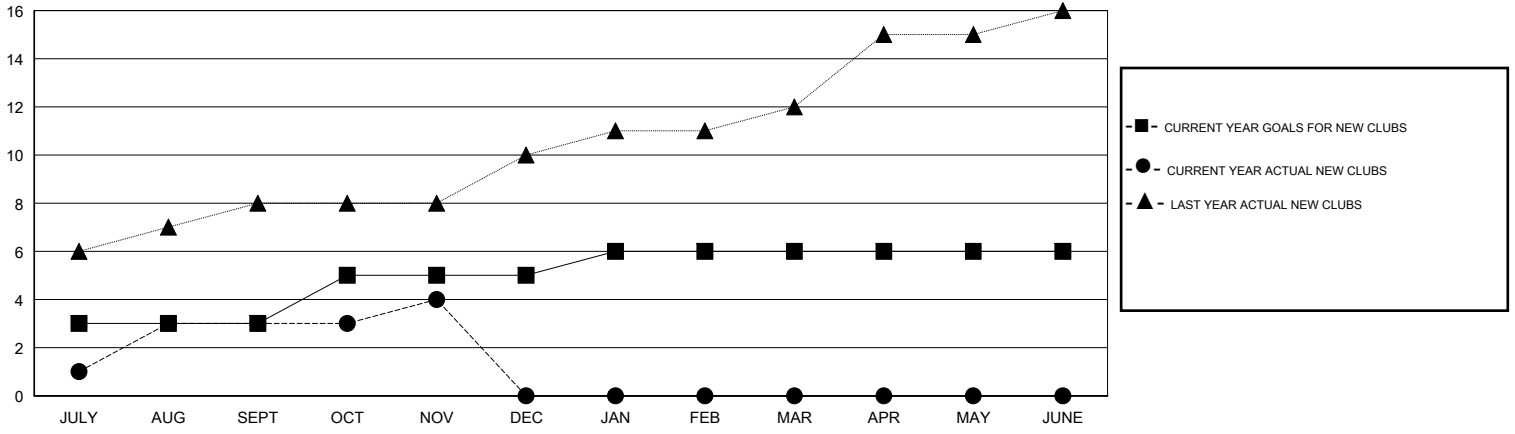
LOCATION INDIA

GMT CA 6

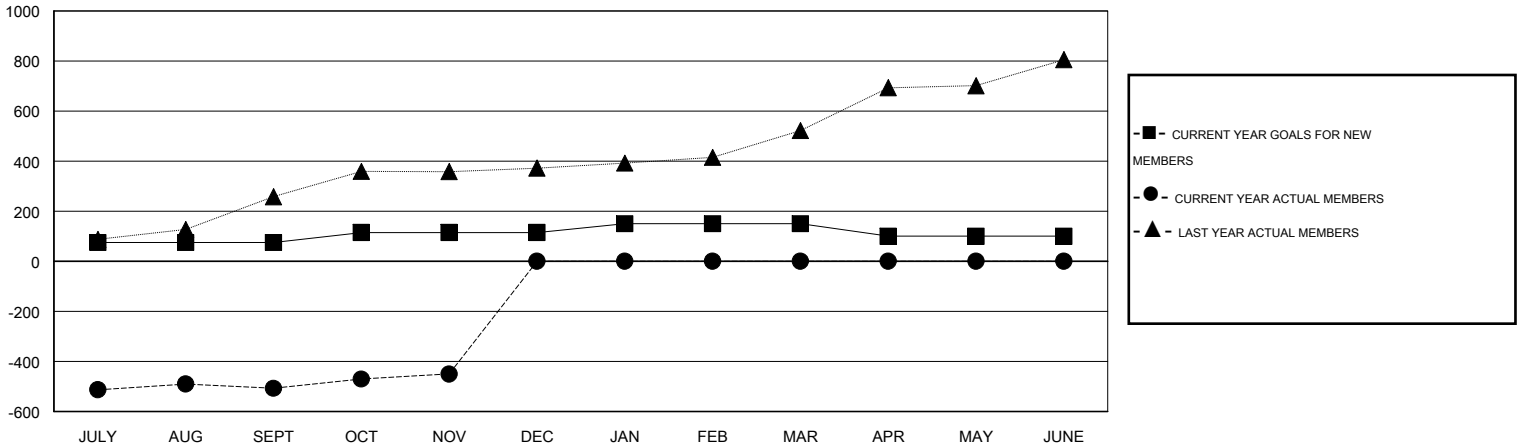
Clubs				
RESULTS FOR 2015-2016				
QUARTER	NEW CLUB GOAL	NEW CLUBS	DROPPED CLUBS	NET GAIN/LOSS
JULY/AUG/SEPT	3	3	0	3
OCT/NOV/DEC	2	1	1	0
JAN/FEB/MAR	1	0	0	0
APR/MAY/JUNE	0	0	0	0

Members				
RESULTS FOR 2015-2016				
QUARTER	NEW MEMBER GOAL	CHARTER AND NEW MEMBERS ADDED	DROPPED MEMBERS	NET GAIN/LOSS
JULY/AUG/SEPT	75	102	609	-507
OCT/NOV/DEC	40	72	15	57
JAN/FEB/MAR	35	0	0	0
APR/MAY/JUNE	-50	0	0	0

GOALS AND ACTUAL NEW CLUBS CUMULATIVE



GOALS AND ACTUAL MEMBERS CUMULATIVE



DROPPED CLUBS: 1

36 CLUBS OF 130 ADDED 1 OR MORE NEW MEMBERS

GENDER DISTRIBUTION	
MALE	2,896 (73.90%)
FEMALE	1,023 (26.10%)

DROPPED MEMBERS	
DECEASED	2
CLUB CANCELLED	0
OTHER	622
TOTAL	624

[CLICK HERE FOR HEALTH ASSESSMENT DATA](#)

FAMILY UNIT MEMBERS	1,283
HEAD OF HOUSEHOLD	564
NON-HEAD OF HOUSEHOLD	719